

# SUSTAINABILITY REPORT

# 2025



Photo by: @YaisYusman



# MESSAGE FROM OUR SUSTAINABILITY CHAMPION



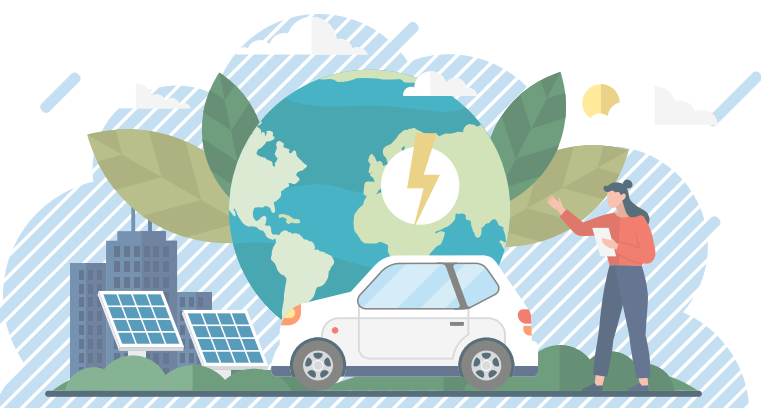
Over the past year, our journey towards a greener, more sustainable West Coast has continued to grow, powered by the dedication of our residents, volunteers, and partners. Our vision to transform our Singapore to a sustainable green haven is taking shape, and together, we are making meaningful progress. Through the Action for Green Towns (AGT), we have strengthened our efforts in Zero Waste, Energy Efficiency, and Green Environment, while ensuring that education remains a key driver of change.

We have expanded recycling programmes, introduced new clean energy initiatives, and added more green spaces, all with the goal of creating a more livable and sustainable community for all. None of this would be possible without the collective spirit of our community. Seeing so many residents, young and old, come together to champion sustainability by sharing ideas, volunteering their time, or adopting sustainable practices, has been truly inspiring. Your passion fuels this movement, and I am deeply grateful for your contributions.

While we celebrate our progress, our work is far from over. Sustainability is a shared responsibility, and every action we take, no matter how small, brings us closer to our goal. Let's continue to build a zero waste, energy efficient, and greener West Coast, our best home, together!

**MS RACHEL ONG**

**Sustainability Champion (2021–2025)  
West Coast Town Council**





# TOWARDS ZERO WASTE

TURNING TRASH INTO TREASURE



Zero Waste is a sustainable approach designed to minimize resource depletion by emphasising conservation. It follows the principles of the five Rs—Refuse, Reduce, Reuse, Recycle, and Repurpose, advocating for responsible manufacturing, consumption, and material recovery. This method aims to eliminate waste without incineration or harmful emissions, safeguarding the environment and public health.



# ZERO WASTE



## ALBA I-BIN

### Alba I-Bins Installed

Since December 2024, Alba I-Bins have been installed across West Coast GRC to make recycling more convenient for residents. These bins allow for the collection of paper, fabrics, e-waste, and metals. Currently, a total of **12 three-in-one I-Bins have been placed** throughout West Coast Town.



## SG CLEAN DAY

### Quarterly Litter Picking Day

SG Clean Day is organized by the Public Hygiene Council (PHC) and this initiative encourages residents to be more mindful of littering and waste disposal. On this day, Town Councils temporarily halt general cleaning in ground-floor common areas and open spaces, allowing residents to observe their estate's cleanliness before and after the break.

## CLOOP

### Textile Recycling

The Cloop textile recycling bins are a familiar sight across Singapore which provides residents with a convenient way to drop off new or used textiles and apparel for reuse, repurposing, and recirculation. Since its installation in West Coast Town in 2023, residents' collective efforts have helped collect an impressive **256,990 kilograms of textiles**.



## SGRECYCLE

### Paper Recycling

SG Recycle, an initiative by SG Paper Recycle Pte Ltd, provides Paper Recycling Machines that make it easy for the public to recycle wastepaper. In 2024, residents of West Coast Town contributed to a remarkable effort, collecting a total of **30,499 kilograms of paper** through this initiative.



# ZERO WASTE



## NEA BLOOBINS

### Recycling Bins for Paper, Plastic, Metal & Glass

NEA-licensed Public Waste Collectors have placed **563 commingled blue recycling bins** across West Coast Town, making recycling easily accessible for residents in HDB estates. These bins allow for the convenient disposal of common household recyclables, including paper, plastic, metal, and glass.



## UPCYCLED MRT BENCHES

### Giving Retired MRT Trains a Second Life

**Eighteen locations** across West Coast Town features upcycled MRT seats, providing residents with unique and functional seating. In collaboration with SMRT, the project aims to upcycle at least 1,500 MRT seats for use in void decks, promoting sustainability through innovative design, bringing a fresh and creative touch to the estate by repurposing retired MRT train seats into community benches.



## ALBA E-WASTE COLLECTION

### Quarterly E-Waste Collection Made Easy

In collaboration with various Town Councils, ALBA E-Waste has been organising quarterly collection drives across residential estates, offering residents a convenient and responsible way to dispose of electronic waste. Thanks to your support, over **2,132 kilograms of e-waste** have already been collected in 2024.



## GENECO RED PACKET RECYCLING

### Red Packet Recycling Initiative

The Geneco Red Packet Recycling Initiative gives used red packets a second life while promoting sustainability during the festive season. It serves as a reminder to be mindful of our environmental impact even as we celebrate. We're thrilled to share that in 2024, a total of **51 kilograms of red packets were collected and recycled.**





# ENERGY EFFICIENT

**EMPOWERING EFFICIENCY, EMBRACING SUSTAINABILITY**



**West Coast Town Council is continuously introducing new energy-efficient initiatives to reduce energy consumption while maintaining comfort and efficiency. Through smart technology and innovative infrastructure, these efforts help lower greenhouse gas emissions and bring long-term cost savings. Together, we can build a greener, more sustainable future!**



# ENERGY EFFICIENT



## SOLAR PANELS

# 70,696

**m<sup>2</sup> of Solar Panels Installed**

Solar panels have been installed across HDB estates in West Coast Town under the HDB SolarNova Programme to enhance energy efficiency and support green initiatives. In the day time, our solar panels generate more energy than our buildings consume. By harnessing renewable solar energy, we can efficiently power common areas, reduce dependence on non-renewable resources, and achieve long-term energy savings—all while fostering a cleaner, more sustainable community.



## ELECTRIC VEHICLE CHARGERS

# 298

**Electric Vehicle  
Chargers Installed**

As part of Land Transport Authority's (LTA) efforts to reduce our carbon footprint, Electric Vehicle (EV) Chargers have been installed across 20 HDB carparks. These chargers provide residents with a more accessible and seamless charging experience, encouraging the adoption of sustainable transportation. By supporting green mobility, we take another step toward a cleaner and more energy-efficient community.





# ENERGY EFFICIENT



## HIGH VOLUME LOW SPEED (HVLS) FAN

**26** HVLS Fan Installed

High Volume Low Speed (HVLS) fans are an environmentally friendly and sustainable cooling solution designed to maximize airflow while minimizing energy consumption. Operating at low rotational speeds with large-diameter blades, these fans move a greater volume of air using significantly less power than traditional high-speed fans.

## ELEVATOR ENERGY REGENERATION SYSTEM

**158** Lifts upgraded

Under the Lift Replacement Programme, these new lifts are equipped with the Elevator Energy Regeneration System (EERS), which helps reduce energy consumption. With EERS, up to 20% of the energy used by lifts can be recovered without impacting their operations, contributing to greater energy efficiency in our town and a more sustainable future, and lowering its overall environmental footprint. This initiative aligns with global efforts to combat climate change and promote energy efficiency in urban infrastructure.

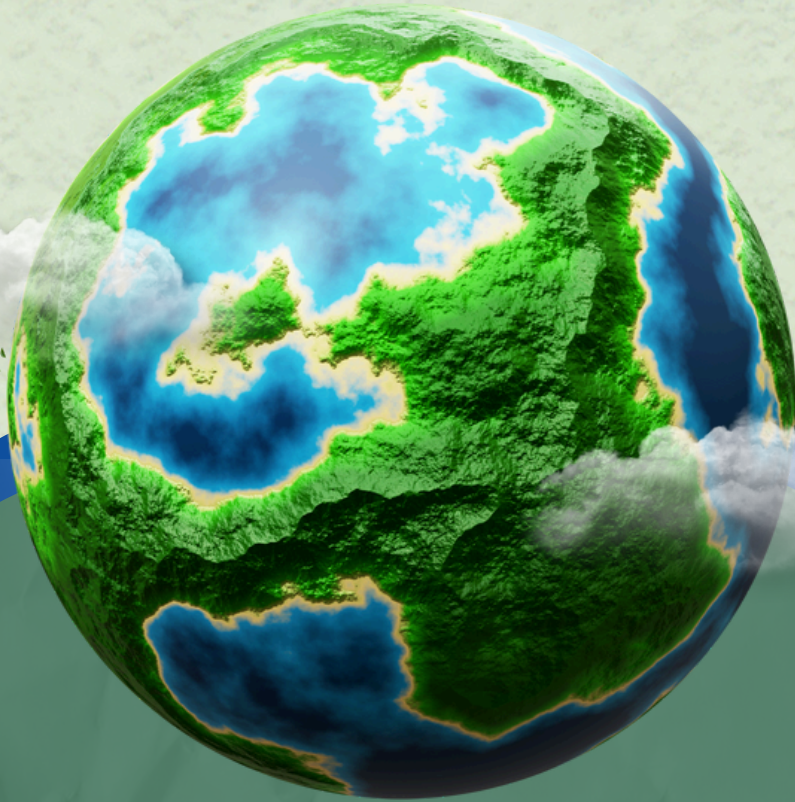






# **GREEN ENVIRONMENT**

**PRESERVE NATURE, PROTECT OUR FUTURE**



**A green environment helps create healthier, more sustainable communities. It improves air quality, reduces heat, and supports wildlife. Green spaces also promote well-being by offering places for relaxation and exercise, while helping to fight climate change by absorbing carbon and balancing the ecosystem.**



# GREEN ENVIRONMENT



49

## Community Gardens

Community gardens allow residents to grow their own food, reduce the carbon footprint of imported produce, and enhance local biodiversity. These gardens also provide valuable green spaces for relaxation, community engagement, and promote sustainable living practices within our zones.

982

## Trees Planted

Tree planting is essential for a green environment. Over the past four years (2021-2024), we have planted 982 trees across all divisions, helping to clean the air, reduce heat in towns, and provide homes for wildlife. Trees also absorb carbon dioxide, aiding in the fight against climate change. Planting more trees creates a healthier, cooler, and more sustainable environment for all.



466

## Double Bicycle Racks Installed

By providing space-efficient bicycle parking, DBRs encourage more residents to cycle rather than rely on cars, reducing traffic congestion and lowering carbon emissions. The use of bicycles helps reduce pollution, improve air quality, and support healthier lifestyles. Installing DBRs also helps optimize space.





# GREEN ENVIRONMENT



2

## Rooftop Gardens Built

Roof gardens are an important part of our sustainability initiatives. By transforming underutilized rooftop spaces into green areas, we help reduce the urban heat island effect and improve air quality. These gardens contribute to energy efficiency by insulating buildings, reducing the need for cooling. They also promote biodiversity and offer residents valuable green spaces for recreation and relaxation. With these rooftop gardens, we continue to enhance the eco-friendly environment within our precincts, supporting a more sustainable future for the community.



Photo by: @YaisYusman

12

## Allotment Gardens Built

Allotment gardens provide residents with the opportunity to grow their own food, supporting local food production and reducing dependency on external sources. These gardens align with our sustainability goals by cutting down on the carbon footprint of transported goods and encouraging sustainable practices. They also foster community engagement, promote healthy living, and enhance green spaces within our precincts. By offering these spaces, we contribute to a more self-sufficient and eco-friendly environment for all residents.





# HEARTWARE

Physical • Social • Mental

***Driven by Heart, Built for Change***





# PHYSICAL

*Creating Heartfelt Connections, Strengthening Neighbourhoods*

5

## BARRIER-FREE ACCESS RAMPS INSTALLED

Barrier-free access (BFA) is about making sure everyone can easily get to and move around different places, no matter their abilities. This means designing spaces with ramp so that people with mobility challenges can use them without barriers. By creating these accessible spaces, we help make our community fairer and more inclusive. It also reduces the need for less sustainable ways of getting around, supporting a more eco-friendly and connected environment for everyone.

41

## COVERED LINKWAYS BUILT

Linkways are an essential part of creating a connected, sustainable environment. By providing seamless pathways between locations, they make it easier for pedestrians and cyclists to travel efficiently and safely. Our vision is to connect everywhere to everywhere—linking communities, amenities, and public transport hubs—ensuring greater accessibility for all. These connections reduce reliance on cars, lower carbon footprints, and promote active living, all while fostering a more inclusive and eco-friendly town.

As we continue to expand this network, we are creating a more integrated, eco-friendly, and inclusive urban environment for all.





# PHYSICAL

*Creating Heartfelt Connections, Strengthening Neighbourhoods*

## SPORT-IN-PRECINCT AT BLK 176 BOON LAY DRIVE



Sports facilities in precincts promote active living and community engagement by offering accessible spaces for physical activity. These facilities reduce the need for travel, lowering carbon emissions, and encourage a healthier lifestyle. By fostering sports and recreation within local communities, they help build stronger connections while supporting sustainability goals.

## PLAYGROUNDS & FITNESS CORNERS

### FITNESS CORNER

Fitness corners promote physical activity for all ages, supporting a healthy lifestyle while reducing the need for energy-intensive alternatives. While 104 are designed for senior citizens, they are open to everyone, with **more than 165 fitness corners across the divisions**. These spaces not only encourage well-being but also contribute to a sustainable, eco-friendly environment by promoting outdoor activity.

### PLAYGROUNDS

we have **107 playgrounds across all divisions**. These safe spaces for children to play and develop are designed with sustainability in mind, often incorporating eco-friendly materials and green landscaping. Together, these amenities foster active, healthy lifestyles while strengthening community connections in an environmentally conscious way.





# MENTAL

*Creating Heartfelt Connections, Strengthening Neighbourhoods*



## THERAPEUTIC GARDENS

Our Therapeutic Gardens are located between Blk 732/733 Jurong West Street 73 and in West Coast Park, seamlessly blending sustainability with well-being. These calming green spaces support mental health and biodiversity while promoting relaxation and accessibility. Designed to enhance urban greenery, they foster a more inclusive and eco-friendly community.

Residents of Telok Blangah can soon enjoy their first two Therapeutic Garden, that will be located at Blk 27 Dover Crescent and Blk 3 Dover Road. These new green spaces will offer a serene retreat close to home, providing a peaceful environment to relax, unwind, and connect with nature.

## ACCESSIBLE WAYFINDING FOR ALL

To enhance accessibility and walkability, Nanyang Division has implemented wayfinding paintings across 32 blocks at Jurong West St 71/72/Ave 5. This initiative promotes independent mobility while reducing reliance on additional assistance, supporting a more inclusive and sustainable community.

Designed for long-term use, the murals will be maintained for at least ten years, minimizing resource consumption. By integrating resident feedback, we ensure practical, user-friendly navigation, reinforcing our commitment to sustainable urban design.

703



712



720



701



711



726





# SOCIAL

*Creating Heartfelt Connections, Strengthening Neighbourhoods*



## SUSTAINABILITY CORNER

The launch of the Pioneer Sustainability Corner at Frontier Plaza highlights the collaboration between the different agencies, residents, volunteers, three local schools, and partners like @youthcorpssg.

This space, also serving as a Food Rescue distribution point, showcases our collective commitment to sustainability. Over the past five years, more than 20 initiatives have been rolled out, with continued support from our community and partners.

## ECO GROUPS

### **Nature Kakis**

Nature Kakis lead community nature activities, bringing our City in Nature closer to residents. Divisions like Boon Lay, Nanyang and West Coast actively participate, with members joining or leading projects to encourage more community involvement.

### **Pulai Eco Club**

An interest group under Telok Blangah CCC, which aims to champion and raise awareness on sustainability.

### **Boon Lay in Green Spaces (BLINGS)**

An environment workgroup under Boon Lay CCC, overseeing all the environment and sustainability programmes.





# COMING SOON

*Creating Heartfelt Connections, Strengthening Neighbourhoods*

## FITNESS@FRONTIER

### Overall Circuit



*\*Images are for illustrative purposes only. The final outcome may differ.*

**Fitness@Frontier** is a collaborative initiative proposed by the GROs of West Coast GRC and Pioneer SMC. Implemented by WCTC, the project aims to create a vibrant and connected community by linking the Boon Lay, Pioneer, and Nanyang divisions.

The project will feature several community circuits and 9 fitness stations equipped with a range of facilities, including TRX equipment, multi-generational fitness equipment, and high-intensity fitness equipment. Additionally, the circuits will include rest stops, bicycle repair station, and hard courts with interactive gameplay, providing residents with a comprehensive and enjoyable outdoor recreational experience. The community circuits will take residents on an exploratory journey across the three divisions, with informative signages along the way.

By providing accessible and enjoyable spaces for recreation, socialization, and community activities, the project seeks to bring residents together, build a stronger, more cohesive community, and encourage a sense of belonging and community pride.



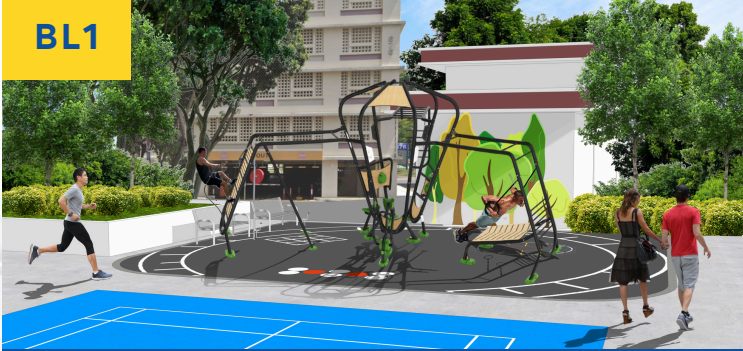
# COMING SOON

## FITNESS@FRONTIER



*\*Artist impression: Images are for illustrative purposes only. The final outcome may differ.*

BL1



BL2



BL3



NY1



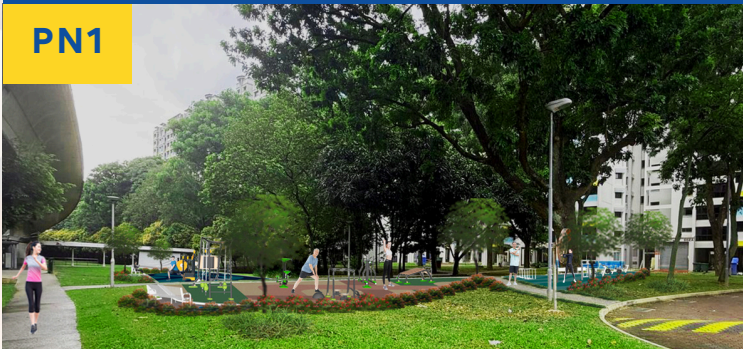
NY2



NY3



PN1



PN2 (Fitness Corner)



PN2 (Playground)



PN3





# COMING SOON

*Creating Heartfelt Connections, Strengthening Neighbourhoods*

## SPORT-IN-PRECINCT @ BLK 19A DOVER CRESCENT

### Multi- Sports Open Space

The Multi-Sports Open Space promotes an active lifestyle and well-being while optimizing the use of public space.

### Artificial Lawn Bowling Area

The Artificial Lawn Bowling Area offers a durable, low-maintenance playing surface that reduces water usage and eliminates the need for pesticides or fertilizers, supporting sustainable recreational spaces.

### Children's Playground

The Children's Playground is designed with sustainable materials and safety features, promoting eco-friendly play and community well-being.

### Two Fitness Corners (For General & Senior use)

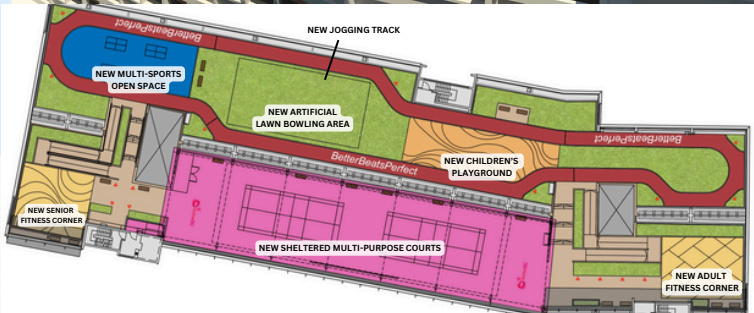
The two Fitness Corners encourages active living with outdoor exercise equipment, promoting health and well-being in a sustainable, eco-friendly space.

### Sheltered Multi- purpose Courts (For Badminton & Pickleball)

The Sheltered Multi-Purpose Courts provide a versatile space for badminton and pickleball, offering year-round access while promoting outdoor activities in a weather-protected, sustainable environment.

### Jogging Track

The Jogging Track encourages fitness and outdoor activity.



*\*Images are for illustrative purposes only. The final outcome may differ.*



# COMING SOON

*Creating Heartfelt Connections, Strengthening Neighbourhoods*

## LIGHT EMITTING SURFACE

We are excited to launch a pilot initiative to install **292 Light Emitting Surface (LES)** block number signages across selected residential estate within West Coast town. This new technology offers a more energy-efficient alternative to traditional lightboxes. LES signages are designed to reduce energy consumption by up to 80%. This pilot will help us evaluate the actual energy savings and gather valuable feedback from residents before expanding the installation to more blocks.



Source: [www.lightemittingsurface.com](http://www.lightemittingsurface.com)

## ELECTRIC VEHICLE CHARGING

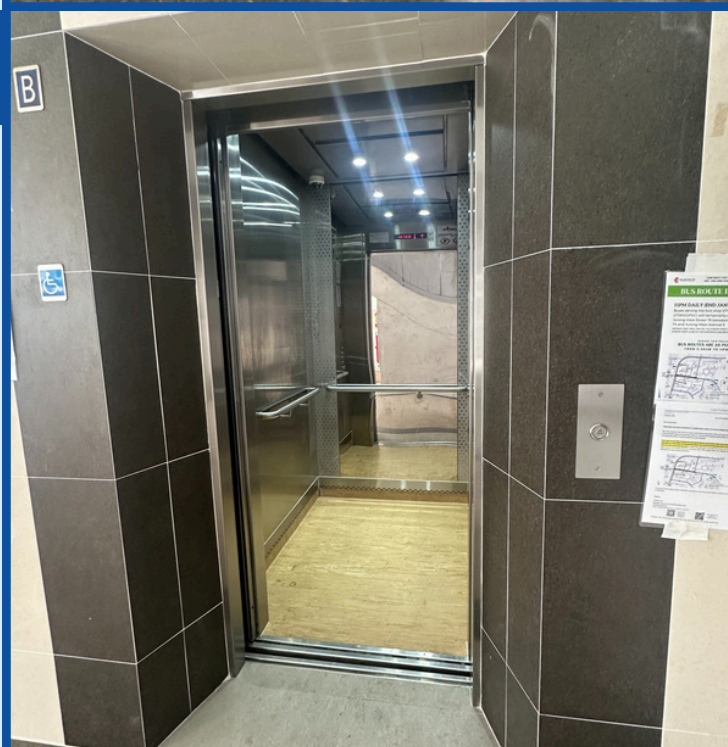
Electric Vehicle (EV) charging infrastructure is expanding to support sustainable transportation and reduce carbon emissions. By providing accessible charging points, we encourage the shift toward cleaner energy and greener mobility. So far, **298 EV chargers have been installed across 6 divisions**, with more to come as efforts continue to enhance the charging network for a more sustainable future.



## ELEVATOR ENERGY REGENERATION SYSTEM (EERS)

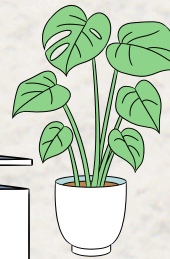
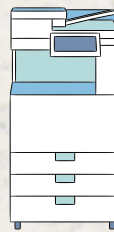
Lift EERS play a key role in reducing energy consumption by converting excess energy generated during lift operations into reusable power. This enhances efficiency and lowers electricity usage, contributing to a greener built environment.

Over the next five years, 668 lifts will undergo the Lift Replacement Programme (LRP), with 158 already completed. Additionally, retrofitting efforts to existing lifts are underway—Batch 1 has seen 31 out of 157 lifts completed, while Batch 2, consisting of 346 lifts, is awaiting implementation. These efforts mark significant progress in enhancing energy efficiency across our estates. (include number of lifts upcoming)





# OFFICE INITIATIVES



Champion

Presented to

West Coast Town Council

Blk 441A, #02-01, Clement Avenue 3, Singapore 121441

for demonstrating excellence in accordance to SEC's Eco Office assessment framework

Validity period: 19 May 2023 – 18 May 2025

*Jen Teo*

JEN TEO  
Executive Director  
Singapore Environment Council

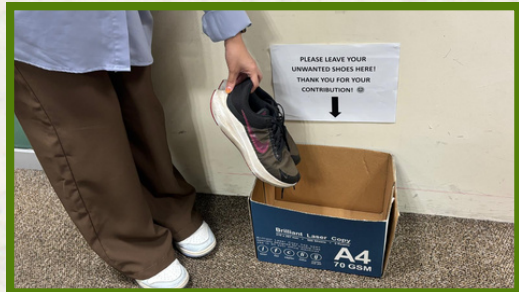


## ECO OFFICE CERTIFICATION

The Eco Office Certification recognizes workplaces that implement sustainable practices, focusing on energy efficiency, waste reduction, and responsible resource use to create a greener office environment.

## REUSABLE CUTLERY

To encourage more sustainable habits, reusable cutlery was provided to staff, helping reduce reliance on disposable utensils and promoting a greener workplace.

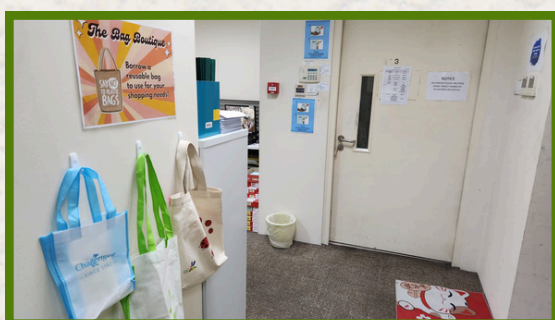


## RECYCLING SHOE DRIVE

We also participated in the Recycling Shoe Drive under ActiveSG's *Old Shoe New Future* initiative, repurposing collected shoes into cushioned sports flooring to promote sustainability and reduce waste.

## RECYCLING TEXTILE DRIVE

Our office organized a Textile Recycling Drive, donating unwanted textiles to Cloop and Life Line in support of the new Zero Waste textile recycling points around the estates, helping to reduce landfill waste.



## THE BAG BOUTIQUE

The Bag Boutique initiative encourages the reduction of single-use plastic bags by offering reusable bags near exits for takeaway food or purchases, promoting sustainable choices among staff.